

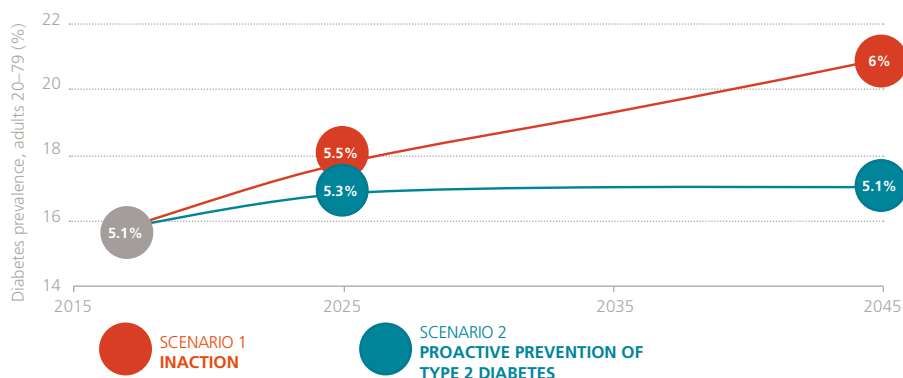
cities changing diabetes copenhagen



COPENHAGEN


is systematically working to **bend the curve** on type 2 diabetes


Two scenarios illustrate that taking action on obesity can hold back the rise of type 2 diabetes.¹



The Diabetes Projection Model plots the trajectory of diabetes prevalence over time and illustrates how reducing the prevalence of obesity by 25% would reduce the burden of diabetes.¹

Obesity is the biggest modifiable risk factor for type 2 diabetes²

11% 
OF ADULTS IN COPENHAGEN
HAD OBESITY IN 2017.³

18–20% 
OF CHILDREN AGED 6–9 IN
DENMARK ARE OVERWEIGHT OR
HAVE OBESITY.⁴

About Cities Changing Diabetes

Cities Changing Diabetes is a first-of-its-kind partnership programme initiated between Novo Nordisk, University College London and Steno Diabetes Center Copenhagen. The programme has been a part of raising urban diabetes as a growing global concern and is now working to help cities identify how they can integrate diabetes prevention into their city strategies in order to create long-term, sustainable change.

For more information, visit CitiesChangingDiabetes.com

Reducing obesity by 25% by 2045, could:

prevent
4,600
CASES OF TYPE 2
DIABETES.¹

save
33 MILLION
US DOLLARS IN HEALTHCARE
EXPENDITURE.¹

CITIES CHANGING DIABETES
PARTNERS IN COPENHAGEN

Steno Diabetes Center Copenhagen
Danish Diabetes Association
University of Copenhagen
City of Copenhagen



REFERENCES:

1. Cities Changing Diabetes. Diabetes Projection Model, Copenhagen. Data on file. Novo Nordisk. In: Incentive, ed. Holte, Denmark 2017.
2. Chen L, Magliano DJ, Zimmet PZ. The worldwide epidemiology of type 2 diabetes mellitus—present and future perspectives. *Nature reviews endocrinology*. 2012;8(4):228.
3. Kilsmark J. Sundhedsprofil 2017 – Resultater for Københavns Kommune. Copenhagen: Copenhagen Municipality; 2017.
4. World Health Organization. Childhood overweight and obesity. www.who.int/dietphysicalactivity/childhood/ov/. Published 2017. Accessed June, 2017.

